



1×1A Optical Switch

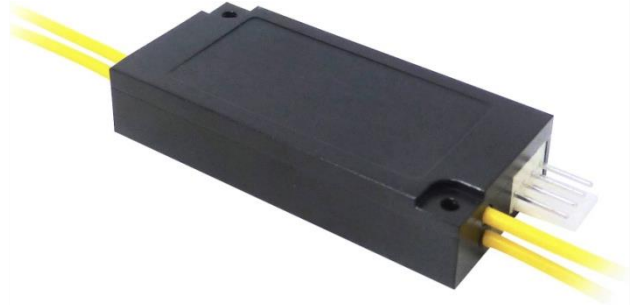
professional supplier of fiber optical component

◆ Features

- Low Insertion Loss
- Wide Wavelength Range
- Low Crosstalk
- High Stability, High Reliability
- Epoxy-free on Optical Path
- Latching and Non-latching

◆ Application

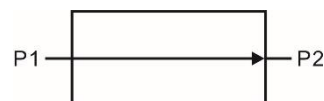
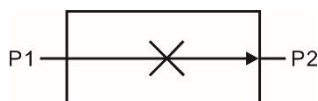
- Metropolitan Area Network
- R&D in Laboratory
- System Monitoring
- Configurable OADM



◆ Performance

Parameters		OSW-1×1A	
Wavelength Range	nm	650~1310	1260~1670
Testing Wavelength	nm	650/780/850/980/1064/1310	1310/1490/1550/1625/1650
Insertion Loss	dB	Typ:0.6,Max:1.0	Typ:0.5 ,Max:0.8
Return Loss	dB	≥30	≥50
Crosstalk	dB	≥35	≥55
PDL	dB	≤0.05	
WDL	dB	≤0.25	
TDL	dB	≤0.25	
Repeatability	dB	≤±0.02	
Power supply	v	3.0 or 5.0	
Lifetime	Cycle	≥10 ⁷	
Switch Time	ms	≤8	
Transmission Power	mW	≤500	
Operation Temperature	°C	-40~+85	
Storage Temperature	°C	-40~+85	
Weight	g	16	
Dimension	mm	(L)55×(W)26×(H)10.8(±0.2)	

◆ Route States





1×1A Optical Switch

professional supplier of fiber optical component

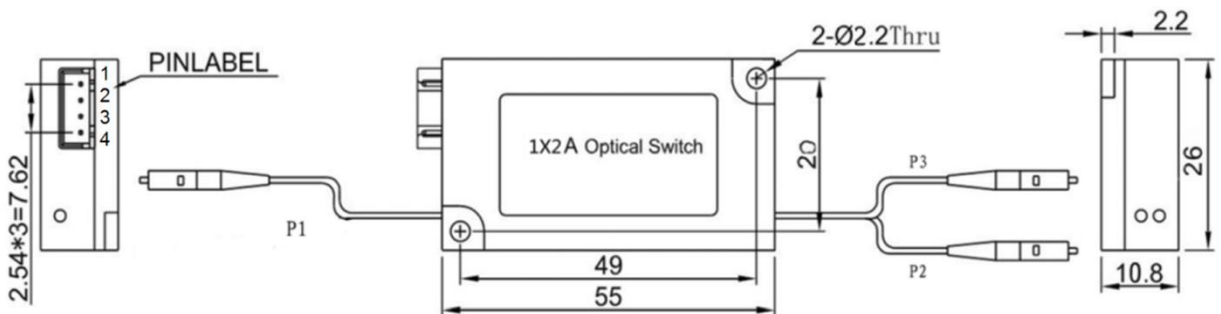
◆ Pins

1×1A	Optical Path	Electric Drive		Sensor Status	
		Pin 1	Pin 2	Pin3	Pin4
Non-Latching	Close	GND	GND	OPEN	
	P1- P2	V+	GND	CLOSE	
Latching	Close	--	--	V+	GND
	P1- P2	GND	V+	--	--

◆ Electrical parameters

	Voltage	current	Resistor
5V Latching	4.5~5.5	36~44mA	125Ω
5V Non-Latching	4.5~5.5	26~32mA	175Ω
3V Latching	2.7~3.3	54~66mA	50Ω
3V Non-Latching	2.7~3.3	39~47mA	70Ω

◆ Dimensions



◆ Ordering Information: OSW-1×1A-A-B-C-D-E-F-G

A	B	C	D	E	F	G
Mode	Wavelength	Voltage	Control Model	Fiber Diameter	Fiber Length	Connector
SM:9/125um M5: 50/125um M6: 62.5/125um M60:600/630 um	85: 850nm 13: 1310nm 14: 1490nm 15: 1550nm 162: 1625nm 165: 1650nm 13/15:1310/1550nm	3: 3V 5: 5V	L: Latching N:Non-Latching	25:250um 90:900um 20:2.0mm 30: 3.0mm	05:0.5m 10:1.0m 15:1.5m	OO:None FP: FC/PC FA: FC/APC SP: SC/PC SA: SC/APC LP: LC/PC LA: LC/APC